

CAPABILITY STATEMENT



TABLE OF CONTENT

Section 1 KJPP Rengganis, Hamid & Rekan

Section 2 CBRE

Section 3 Scope of Services

Section 4 Permits and Registration

Section 5 Major Assignments

Section 6 Notable Clients



Section 1 KJPP Rengganis, Hamid & Rekan



Brief Description

- Established in 1984 as PT HBN
- Registered in the Ministry of Finance, SEC, Central Bank, all major government and private banks

KJPP Rengganis, Hamid & Rekan (KJPP RHR) was established in 2008 to provide independent valuation and advisory services. The transformation from a corporation (previously PT Heburinas Nusantara in association with CBRE) to a partnership (KJPP RHR) is to comply with the Ministry of Finance (MOF) regulation No. 125/PMK.01/2008 . The firm has all the track record of PT HBN (est. in 1984) and has been registered in the MOF, Otoritas Jasa Keuangan (Financial Services Authority - OJK) and all major government and private banks. Since 1 March 2011, KJPP RHR has 'strategic alliance' with CBRE to conduct valuation and advisory services in Indonesia.

140 registered Valuers with 26 licensed Public Valuers

Partners have licenses in property and business valuation, and currently there are 26 public valuers (licensed in MOF) and 140 registered valuers in MAPPI (Indonesian Society of Appraisers).

About KJPP RHR

- ❖ In October 2008 KJPP Rengganis, Hamid & Rekan (KJPP RHR) was established to provide independent valuation and advisory services, which previously was done under PT HBN in association with CBRE



Section 2 CBRE



Corporate Information

CBRE Group, Inc. is the world's largest commercial real estate services and investment firm, with 2022 revenues of \$30.8 billion and more than 100,000 employees (excluding affiliate offices). CBRE has been included on the Fortune 500 since 2008, ranking #135 in 2022. It also has been voted the industry's top brand by the Lipsey Company for 19 consecutive years, and has been named one of Fortune's "Most Admired Companies" for 13 years in a row, including being ranked number one in the real estate sector in 2023. Its shares trade on the New York Stock Exchange under the symbol "CBRE."

CBRE provide services for real estate including facilities management, project management, transaction (both property sales and leasing) and consulting services, capital markets (property sales, mortgage origination, sales and servicing), leasing, investment management, property management, valuation and development services.

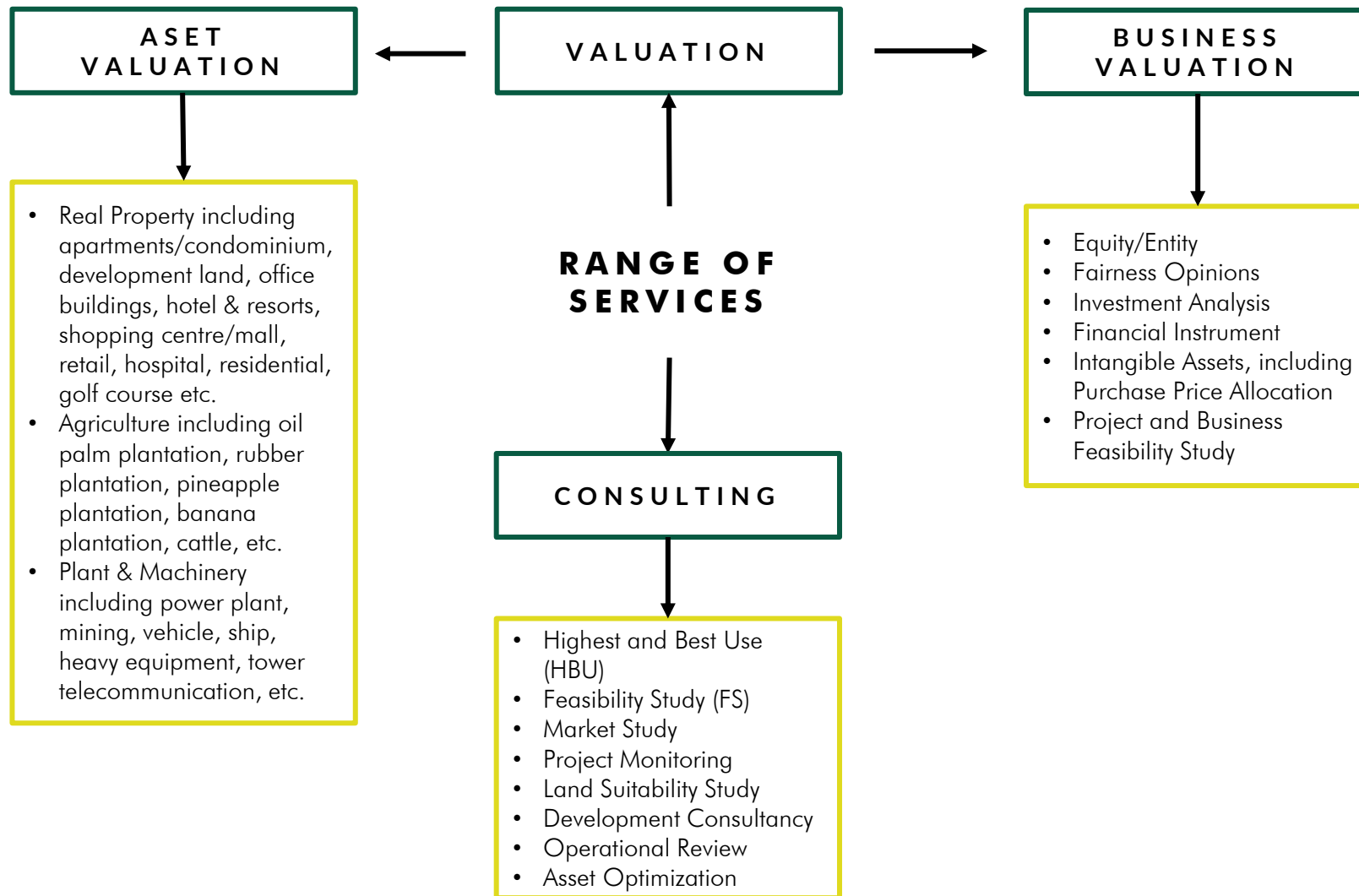
CBRE has clients in 100+ countries, including over 95% of the Fortune 100, 500+ Offices, 115K People.



Section 3 Scope of Services



Scope of Service



Scope of Valuation & Advisory Services

- Annual Asset Valuation
- Valuation related to Financial Statements (IFRS Compliance)
- Valuation related to Initial Public Offering or Corporate Actions
- Valuation related to Fairness Opinion on Material Transactions for Public Companies
- Valuation related to Pension Fund
- Valuation for Lending or Collateral Purposes
- Valuation for Asset Disposal or Acquisition
- Valuation related to Mergers and Acquisitions
- Valuation related to Company Take Over
- Valuation related to BOT (Build, Operate and Transfer) cooperation
- Valuation related to Financial Restructuring
- Valuation to determine Rental, Compensation, or Rent Review
- Valuation related to land condemnation by the Government
- Valuation related to tax purposes (fixed asset revaluation)
- Project Monitoring (bank mandatory)
- Project Feasibility Assessment (bank mandatory)
- Market Study
- Marketability & Feasibility Study
- Highest & Best Use Study
- Feasibility Study
- Project Development Consultancy
- Investment Advisory



Section 4 Permits and Registration



Permits and Registration

- Deed of Incorporation No. 6 dated 16 December 2008,
- Latest Deed of Amendment No. 1 dated 3 February 2025
- Tax Registration Number (NPWP) : 02.877.436.2-011.000
- Letter of Domicile Number: 1156/27.1BU.1/31.74.02.1003/-071.562/e/2018
- NIB (Business Identification Number) No. 9120110040825
- Indonesian Society of Appraisers (MAPPI) – for valuers
- Licensed Public Valuers in The Ministry of Finance
- Otoritas Jasa Keuangan (Financial Authority Services - OJK)
- Licensed Valuer from National Land Affairs Agency No. 145/KEP-600.15/V/2016

- **Government Banks**
 - Bank Indonesia
 - PT Bank Mandiri (Persero), Tbk
 - PT Bank Rakyat Indonesia (Persero), Tbk
 - PT Bank Negara Indonesia (Persero), Tbk
 - PT Bank Tabungan Negara (Persero), Tbk

- **Private Banks**
 - PT Bank Pembangunan Daerah Jawa Barat & Banten, Tbk
 - PT Bank CIMB Niaga, Tbk
 - PT Bank Bukopin, Tbk
 - PT Bank Danamon Indonesia, Tbk
 - PT Bank Central Asia, Tbk
 - PT Bank Maybank Indonesia, Tbk
 - PT Bank Mega, Tbk

- **Badan Usaha Milik Negara (Government Owned Company)**
 - PT Adhi Karya (Persero), Tbk
 - PT Garuda Indonesia (Persero), Tbk
 - PT Perusahaan Gas Negara, Tbk
 - PT Wijaya Karya (Persero), Tbk
 - PT PLN (Persero)

- **Foreign Banks**
 - PT Bank UOB Indonesia
 - PT Bank DBS Indonesia, Tbk
 - PT Bank QNB Indonesia, Tbk
 - Standard Chartered Bank
 - HSBC Bank
 - Citibank

 - PT Bank Syariah Indonesia
 - PT Bank Muamalat Indonesia, Tbk
 - PT Bank OCBC NISP
 - PT Bank Pembangunan Daerah Sumatera Selatan
 - PT Bank DKI
 - PT Bank Sahabat Sampoerna
 - PT Bank Sinarmas, Tbk

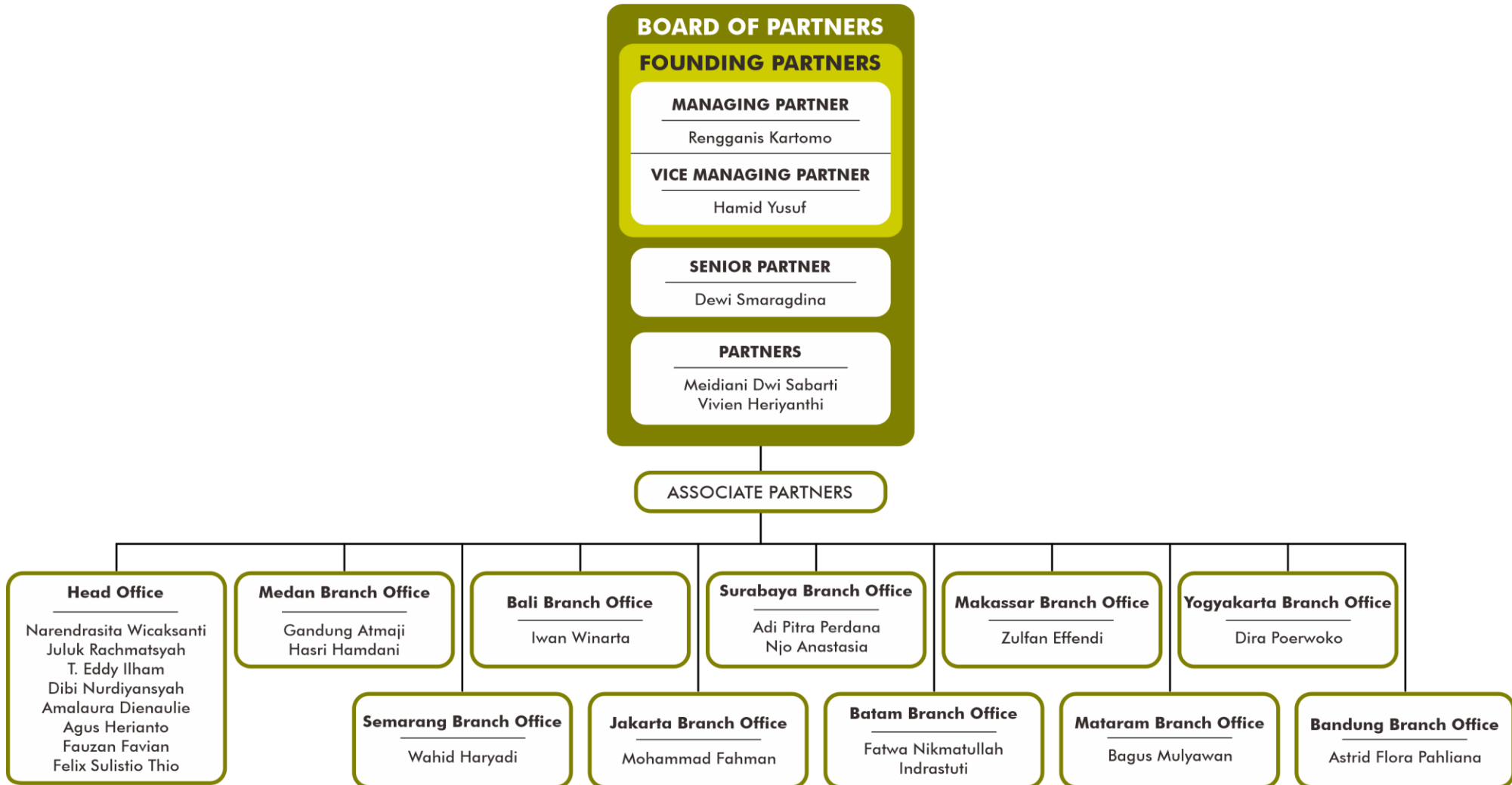
 - PT Perusahaan Perdagangan Indonesia (Persero)
 - PT Perusahaan Pengelola Aset (Persero)
 - PT Telekomunikasi Indonesia, Tbk
 - PT Pertamina (Persero)
 - PT Aneka Tambang, Tbk



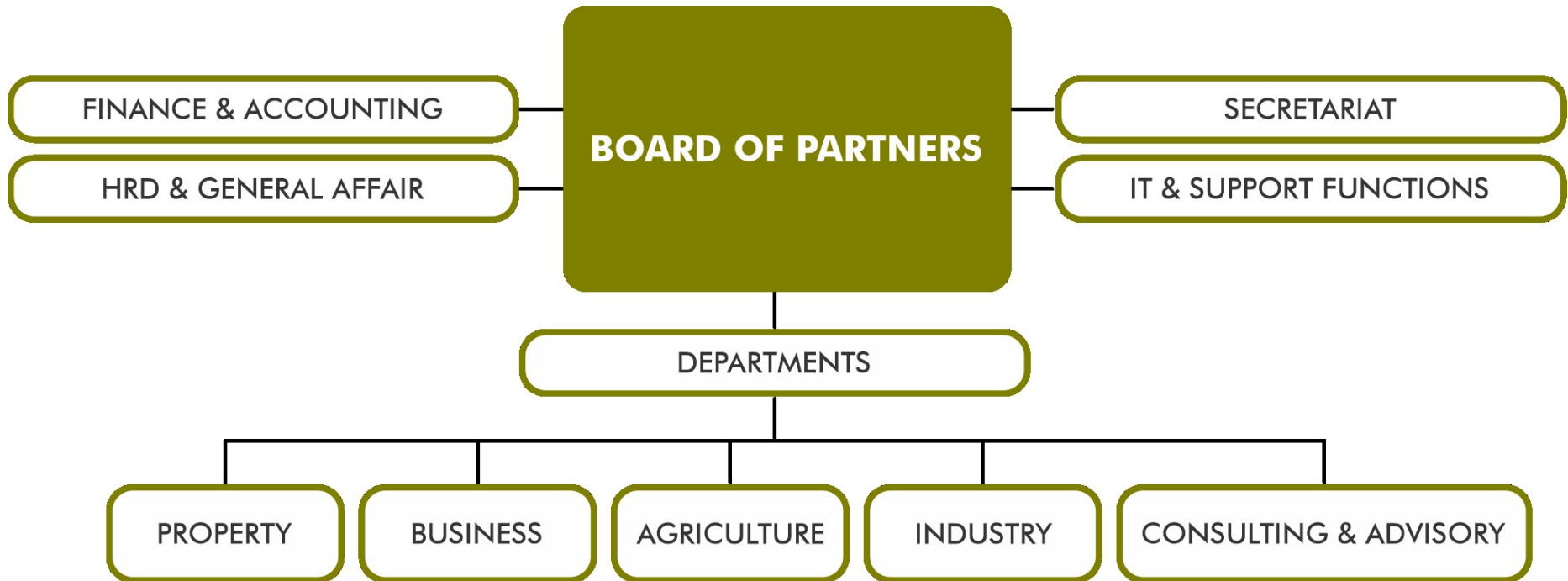
Section 5 Organization



Organization Structure



Organization Structure



Branch Office



Head Office

Menara Kuningan 8th Floor
Jl. HR. Rasuna Said Block X-7 Kav. 5
Jakarta 12940
Phone: +6221 2168 6002
+6221 2168 6003
Email: kjpp.rhp@rhp-valuation.com

Medan Branch Office

Jl. Sultan Agung BA,
Medan 20112
Phone: +62-61 453 0870
Fax: +62-61 415 6682
Email: rhr.medan@rhr.co.id

Yogyakarta Branch Office

Griya Manunggal Mukti Blok B.01 - B
Jalan Ringroad Utara, Depok,
Sleman, Yogyakarta
Phone: +62-85 100 27 0077
Email: rhr.jogja@rhr.co.id

Surabaya Branch Office

Jl. Simpang Darma Permai Selatan
No. 26, Surabaya 60216
Phone: +62-31 731 3071
Fax: +62-31 734 0341
Email: rhr.surabaya@rhr.co.id

Bali Branch Office

Jl. Dewi Sri, Komplek Ruko Parwata No. 1
Kuta, Badung, Bali 80361
Phone: +62-361 472 6044
Fax: +62-361 472 6045
Email: rhr.bali@rhr.co.id

Makassar Branch Office

Jalan Hertasing Utara III,
Komplek Al-Inayah No. 22 A,
Kel. Masale, Kec. Panakkukang,
Makassar 90231
Phone: +62-411 820 441
Email: rhr.makassar@rhr.co.id

Semarang Branch Office

Jl. Soekarno Hatta No. 38,
Tlogosari Kulon, Pedurungan,
Semarang 50196
Phone: +62-24 7641 5748
Email: rhr.semarang@rhr.co.id

Jakarta Branch Office

Graha RHR
Jalan Karet Karya VII No. 9
Karet, Seliabudi, Jakarta Selatan
Phone: +62-21 5020 7670
Email: rhr.jakarta@rhr.co.id

Batam Branch Office

Komplek Orchid Park Blok A No. 8
Batam Centre - Kota Batam 29432
Phone: +62-778 464725
Fax: +62-778 464726,
Email: rhr.batam@rhr.co.id

Mataram Branch Office

Jalan Bung Karno No. 64
Pagesangan Timur, Kota Mataram,
Nusa Tenggara Barat 83127
Phone: +62-370 626 108
Email: rhr.mataram@rhr.co.id

Bandung Branch Office

Jl. Batununggal Permai V No.5,
Batununggal, Bandung Kidul,
Kota Bandung 40267
Phone: +62-22 6316 1014
Email: rhr.bandung@rhr.co.id



KJPP RHR

KJPP Rengganis, Hamid & Rekan
Penilaian Properti, Bisnis & Konsultansi
Wilayah Kerja Negara Republik Indonesia

Section 5

Major Assignments



Major Project

Client	Type Properties	Subject Property	Location
<ul style="list-style-type: none"> PT PLN (Persero) 	Power Plant, Distribution Generator, Substation and Investment Property	3,817 Assets	Aceh, Sumatera Utara, Sumatera Barat, Riau, Kepulauan Riau, Jambi, Bengkulu, Sumatera Selatan, Kepulauan Bangka Belitung, Lampung, Banten, Jawa Barat, DKI Jakarta, Jawa Tengah, DI Yogyakarta, Jawa Timur, Bali, Nusa Tenggara Barat, Nusa Tenggara Timur, Kalimantan Utara, Kalimantan Barat, Kalimantan Tengah, Kalimantan Selatan, Kalimantan Timur, Gorontalo, Sulawesi Utara, Sulawesi Barat, Sulawesi Tengah, Sulawesi Selatan, Sulawesi Tenggara, Maluku Utara, Maluku, Papua Barat and Papua
<ul style="list-style-type: none"> PT Bumi Serpong Damai, Tbk 	Office Building, Mall, Hotel, Apartment, Residential Estate, Shop house, Kiosk and Vacant Land	51 Assets	Jakarta, Depok, Bogor, Tangerang, Bekasi, Semarang, Surabaya, Palembang, Balikpapan, Makassar, Medan and Manado
<ul style="list-style-type: none"> PT Ciputra Development, Tbk 	Mall, Hotel, Apartment, Residential Estate and Hospitals	53 Assets	Bali, Balikpapan, Bandung, Banjarmasin, Batam, Bogor, Cirebon, Jakarta, Jambi, Kendari, Lampung, Makassar, Medan, Palu, Pangkal Pinang, Pekalongan, Pekanbaru, Samarinda, Semarang, Serang, Sidoarjo, Surabaya, Tangerang, Tegal and Yogyakarta



Major Project

Client	Type Properties	Subject Property	Location
<ul style="list-style-type: none"> PT Bank Negara Indonesia (Persero) Tbk 	Office, Official Residence, Apartment, Villa, Warehouse and Vacant Land	303 Assets	Bandung, Batang, Bekasi, Blora, Bogor, Cilacap, Cirebon, Depok, Jakarta, Jepara, Karawang, Kebumen, Kota Purwokerto, Kota Salatiga, Kota, Surakarta, Kudus, Magelang, Makassar, Malang, Padang, Pandeglang, Pati, Pekalongan, Purbalingga, Purwakarta, Purworejo, Semarang, Serang, Surabaya, Tangerang, Tegal, Temanggung, Wonogiri, Wonosobo, and Yogyakarta, Hongkong, New York, Singapura and Tokyo
<ul style="list-style-type: none"> PT Telekomunikasi Selular 	SST Tower and Telecommunication Pole Tower, Intangible Spectrum, IT & Core Network, Transmission, Power Supply, Radio Access Network, Supporting Facility	6,000 Assets	Throughout Indonesia



Section 6 Notable Clients



Bank



Developers



TUAN SING HOLDINGS LIMITED

Plantation Companies



Government Institutions/State-owned companies



Multinational Companies



TUAN SING HOLDINGS LIMITED



KJPP RHR
KJPP Rengganis, Hamid & Rekan
Penilaian Properti, Bisnis & Konsultansi
Wilayah Kerja Negara Republik Indonesia

Industry



Others



British Embassy



Australian Government

Department of Foreign Affairs and Trade



Schweizerische Eidgenossenschaft
Confédération suisse
Confederazione Svizzera
Confederaziun svizra



KJPP RHR

KJPP Rengganis, Hamid & Rekan

Izin Usaha KJPP No. 2.09.0012

Penilaian Properti, Bisnis & Konsultansi

Wilayah Kerja Negara Republik Indonesia

Head Office :

Menara Kuningan 8th Floor | Jalan HR. Rasuna Said Blok X-7 Kav. 5 | Jakarta 12940

☎ +6221 2168 6002, +6221 2168 6003 | ✉ kjpp.rhp@rhp-valuation.com

www.rhr.co.id

Our Offices:

Medan | Yogyakarta | Surabaya | Bali | Makassar | Semarang | Jakarta | Batam | Mataram | Bandung